

# Steve Merchant

P H O T O G R A P H Y

PEOPLE | PETS | PROFILES



[steve@stevemerchantphotography.co.uk](mailto:steve@stevemerchantphotography.co.uk)

07773 372282

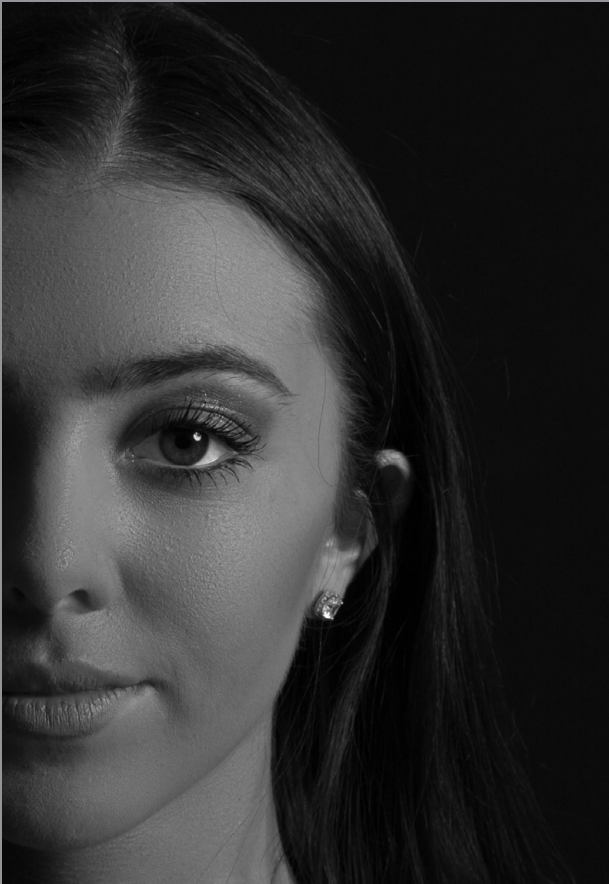


**SWPP**  
Society of Wedding  
& Portrait Photographers

Find us on  

Dated: January 2023

E&OE



## Price List

### Session Fee: £100

Covers 1 hour session, includes £50 credit for purchase of finished images from the list below

Prints	4x6"	Four 4x6" prints supplied in card photo mounts Four (1800px on long edge) digital images	£50
	8x10"	Two 8x10" prints supplied in card photo mounts Four (1800px on long edge) digital images	£100
	10x15"	One 10x15" print supplied in white or black photo frame Four (1800px on long edge) digital images	£100
Canvas	12x12"	One 12x12 inch canvas print	£40
	32x32"	One 32x32 inch canvas print	£150
	12x15"	One 12x15 inch canvas print	£50
	20x30"	One 20x30 inch canvas print	£115

### Packages

Package	Includes	Cost
Bronze	Session Fee, Four 4x6" prints in cardboard mount, Two 8x10" Prints in white or black wooden frame	£175
Silver	Session Fee, Four 4x6" prints in cardboard mount, Two 8x10" & One 10x15" Prints in white or black wooden frame	£250
Gold	Session Fee, Four 4x6" prints in cardboard mount, Two 8x10" & One 10x15" Prints in white or black wooden frame, Two 12x12" Canvas	£300



## Notes, Terms & Conditions

A £50 non-refundable deposit is required to secure a session date, this desopit is non-refundable, however, provided more than 7 days notice is given, it can be transferred to another session date (to be within three months of original session date). If less than 7 days notice is given a £35 administration fee is payable to transfer the session to another date (to be within three months of original session date)

Package prices are only applicable if purchased before the session.

Sessions do not include any hair/makeup/clothing/props/cake.  
Models should come "camera ready"

Gift certificates are available

Copyright remains with the Photographer, the Client is granted a non-exclusive, non-transferrable, non-assignable license to use the images for personal use

px: Pixel Size is, unless otherwise stated, measured along the long edge of the image

Ratio: The ratio of length vs height of the supplied final images, 8x10" images are 5:4 ratio, square images are 1:1 ratio (for reference an HD TV typically has a 16:9 ratio)